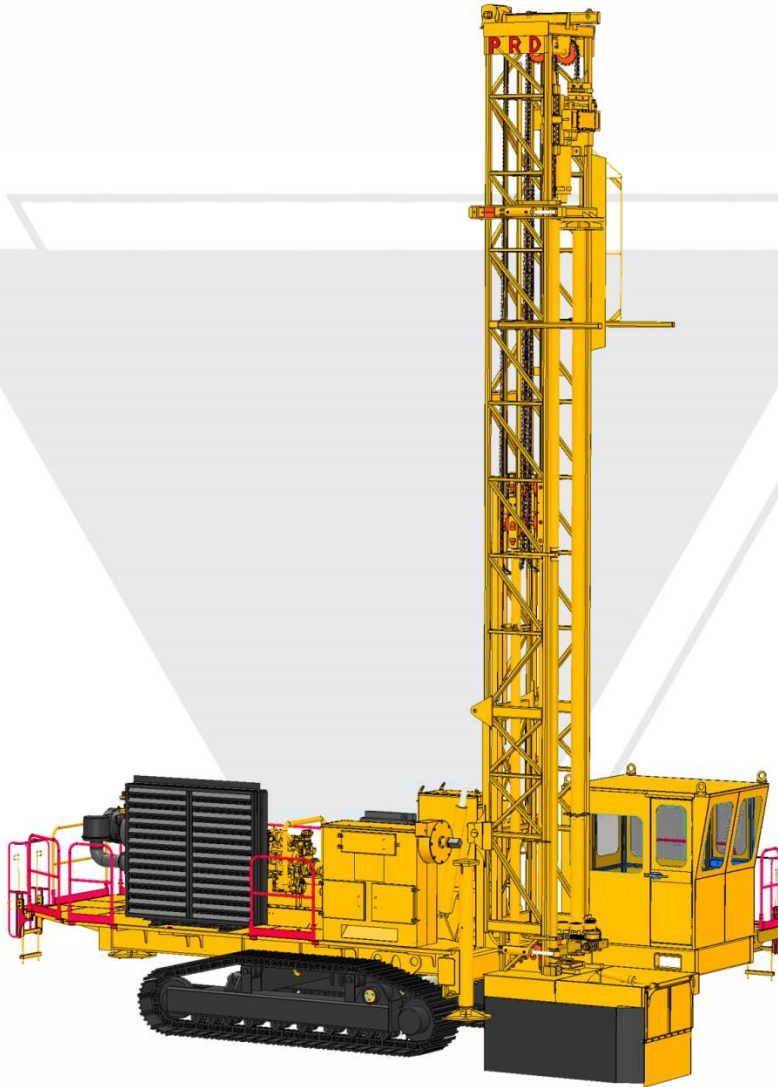




## Technical Specification

### PRD BH 45 200



**PRD 45 200 is a wise choice of blast hole rig for large scale mines with 165 – 240 mm diameter drilling. It is having 22000 kg pull down, 8.4 meter single pass depth and HVAC Cabin with all mining requirements fulfilled.**

Note: The images provided here are for reference only and do not depict the exact specification outlined in this document.





<b>Application</b>	Drilling for blasting in Mines
<b>Capacity</b>	Hole Diameter : 165 – 240 mm (6 ½" - 9 ½") diameter
	Maximum Depth : 45 m
	Estimated machine weight : 42,000 kg
<b>Drilling Method</b>	DTH / Rotary
<b>Prime Mover*</b>	Suitable Deck engine 560 hp
<b>Platform Structure</b>	Heavy I and C section welded steel structure covered with 5mm chequered plate
<b>Mast Assembly</b>	Strong structural steel twin tubular box type construction
	Mast Overall Length : 12400 mm
	Rotary Head Travel : 9245 mm
	Drill rod size : 4 - 1/2"/5" with 9.1 meters length
	Single pass depth : 8.4 m
<b>Mast Raising Cylinder</b>	Mast is raised and lowered by double hydraulic cylinders
<b>Mast Dumping</b>	Mast is provided with forward dumping arrangement
<b>Feed System</b>	2 x Double acting hydraulic cylinder with 1:2 chain reeving system
	Pull Down Force : 22000 kgf
	Pull Up Force : 10000 kgf
	Pull Down Speed : 19 m/min
	Pull Up Speed : 37 m/min
	Weight on bit : 24200 kgf (max)





<b>Rotary Head Assembly (Top Head Drive)</b>	<p>Fabricated steel body with spur gear reduction and oil bath lubrication type gearbox with top air entry having spindle thread connection of API 6 5/8 Reg driven by the single hydraulic motor.</p> <p>Maximum Torque : 976 kg.m (9600 Nm)</p> <p>Rotation Speed : 0 - 140 rpm Fine controlled</p>
<b>Hydraulics</b>	<p>2 x variable displacement pump for rotation, feed and propelling 1 x variable displacement pump for COC (Compressor oil cooler) and ROC (Radiator Cooler) operation 3 x fixed displacement pump for Auxiliary, Hydraulic oil cooler and Dust collector</p> <p>Maximum System Pressure : 3625 psi (250 bar)</p> <p>Hydraulic Oil Cooler : 120 gpm</p> <p>Hydraulic Tank Capacity : 950 litres</p>
<b>Control Panel</b>	<p>A spacious centralised control panel along with Air conditioned cabin with all controls for the operation of drill rig, traction, necessary gauges and control system are fitted for convenient view of drill table</p>
<b>Levelling Jacks</b>	<p>3 x Hydraulic levelling jacks are provided for quick setting and levelling with Box mounted</p>
<b>Breakout Wrench</b>	<p>Hydraulic operated break out wrench is provided for fast breaking of rod joints</p>
<b>Water / Foam Injection Pump</b>	<p>Hydraulic operated water injection triplex pump with necessary fittings, pressure regulator, flow regulator check valve and suction filter are provided</p> <p>Maximum Flow : 80 lpm</p> <p>Maximum Pressure : 40 kg/sq.cm</p>
<b>Rod Changer</b>	<p>Hydraulically operated 4 rod carousel changer to couple drill pipe to Rotary head</p>

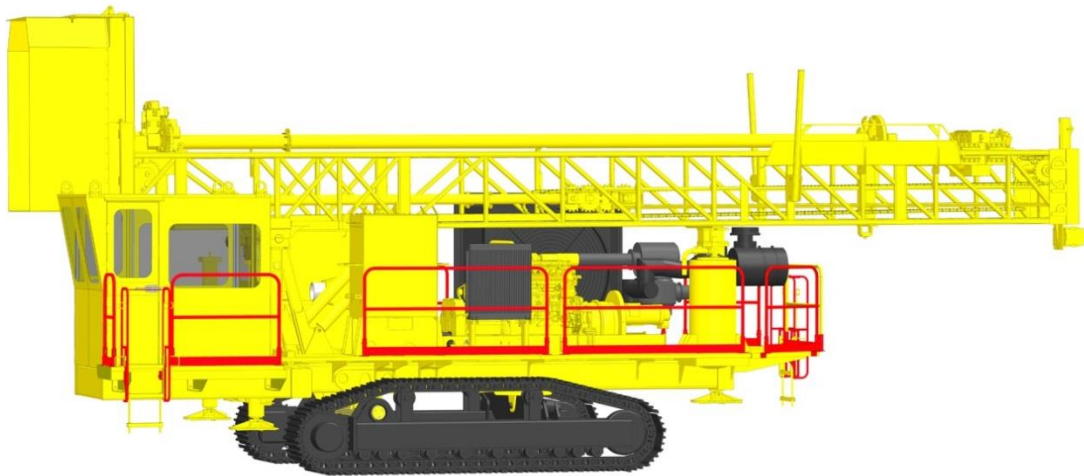
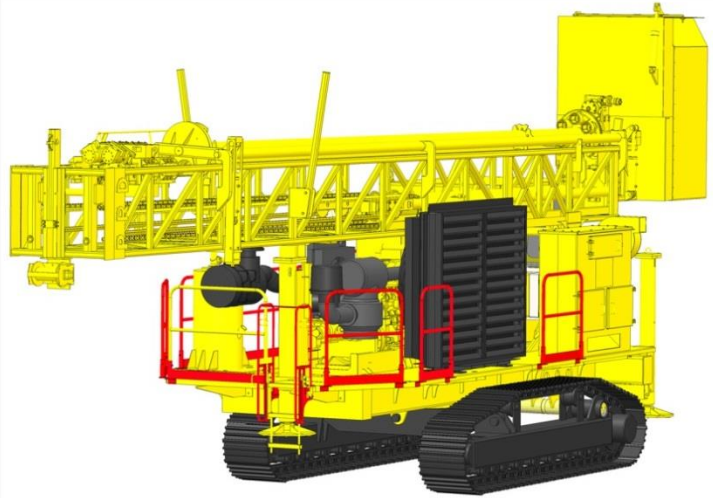
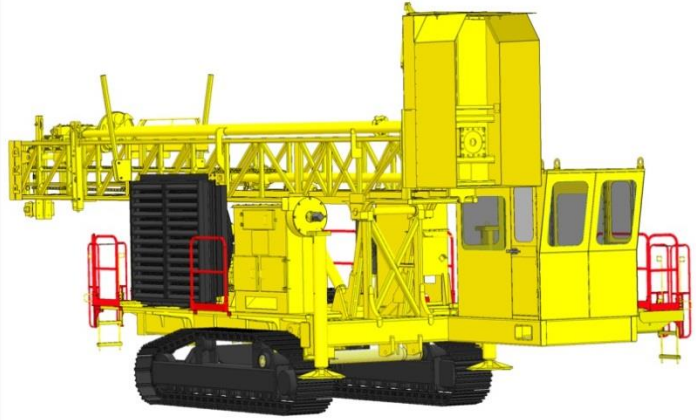
PRD PS N3 Rev: 00

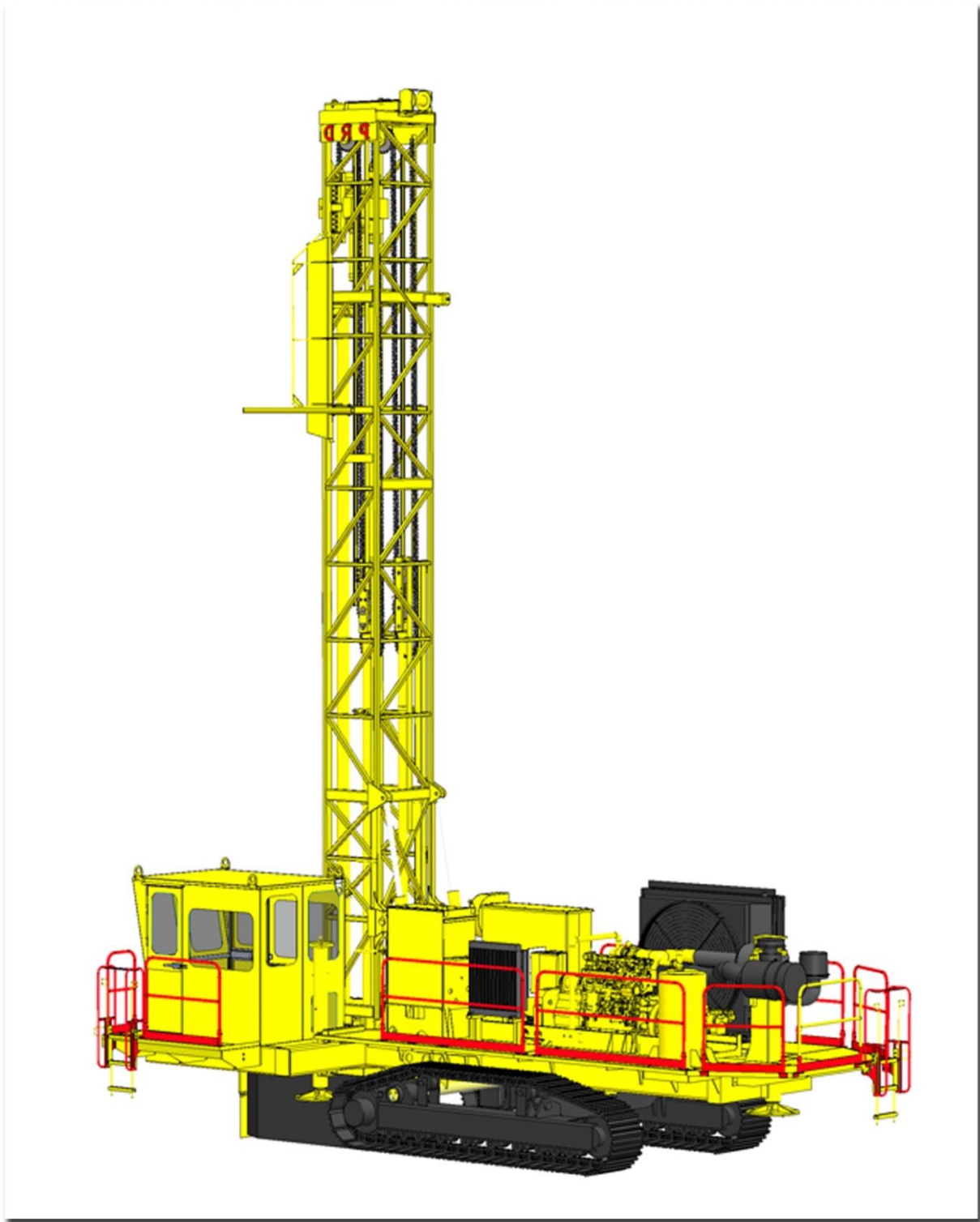


<b>Dust Collector</b>	Dust collector is robust and efficient. Powered to clean holes built with heavy duty system which effectively manages to clear rock fragments and dust. Easy to clean and service
<b>Airline Lubricator</b>	A positive acting venturi type inline lubricator is provided for injecting oil to the down hole hammer. Tank capacity : 25 litres Working pressure : 350 psi
<b>Air Compressor*</b>	<u>Make :</u> ELGI / Atlas Copco / Doosan <u>Compressor capacity:</u> High pressure : 900 cfm - 350 psi (24 bar) Low pressure : 900 cfm - 110 psi (7.5 bar)
<b>Additional Fitments</b>	Night Lights, Tools box
<b>User Manual</b>	Manual for Operation, Maintenance and Spare Parts
<b>Mounting</b>	45 ton Crawler Tramming speed : 1.5 km/hr & 2.7 km/hr
<b>Operators Cabin</b>	HVAC cabin with all controls & gauges provided for easy operation
<b>Optional Attachments</b>	Mines safety features Dust Suppression System Front and Rear Camera Centralized lubrication system Fast fuel filling system Auto Fire Detection and Suppression system

*\*Combinations will vary according to our Design feasibility*







**Happy Drilling forever with PRD Rigs**

